



Smooth



SMOOTH-EBL



SMOOTH-BLK



SMOOTH-EGN

The model **SMOOTH** is a lightweight clog in EVA, that can be used in many aspects in the healthcare. Thanks to the closed front of the shoe, your feet remain always dry.

This model is chemically sterilisable and UV sterilizable. It is also machine washable at 40°C.



SMOOTH-FUX



SMOOTH-LIC

The rubber outsole is slip resistant and provides excellent grip, both on wet and dry floors.



SMOOTH-NAV



SMOOTH-WHT



Smooth

CE-standard
CE EN 20347 certified.



Washable at 40° C



Chemical and UV
sterilizable



Not suitable for autoclave
Attention: this model can not be
sterilized in an autoclave.



Schock absorbing
The midsole in EVA garantees
shock absorption.



Ethylene vinyl acetate (EVA)

The shoe is made of EVA, this material is water proof,
antibacterial and antifungal. It is very light, flexible
and deformation resistant.



Weight: 8.81 oz.

The average shoe weight is 8.81 oz or
250 grams.



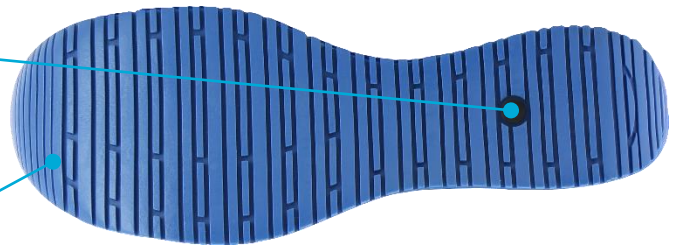
Anti-static ESD

The shoe features a plug that
improves the dissipation of static
electricity and meets the ESD
standard.



Slip resistant SRC

The rubber outsole provides
excellent grip, both on wet and dry
floors and complies with the SRC
standard.



Recommended for

- Operating room personnel
- Professionals who help and assist patients in the shower
- Healthcare professionals
- Nurses and caregivers
- Cleaning personnel
- Laundry personnel
- Wellness and beauty center professionals

Sizes

EU	36	37	38	39	40	41	42	43*	44*	45*	46*
UK	3.5	4	5	5.5	6.5	7	8	9	9.5	10.5	11
US	4	4.5	5.5	6.5	7.5	8	9	10	10.5	11.5	12

(*) colors fuchsia and purple are only available from size 36 till 42